

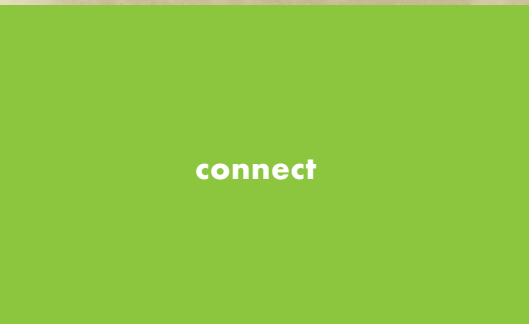
# FALCON™



collaborate



learn



connect





**LEAN**



**80ST**



*800 / FLX table, Thonet MOSS | 3, LEAN Community table, F1600 side chairs, Fifth Avenue booth, 9660 Comida stool, 80ST Community table*



**COMIDA**



**FIFTH AVENUE**



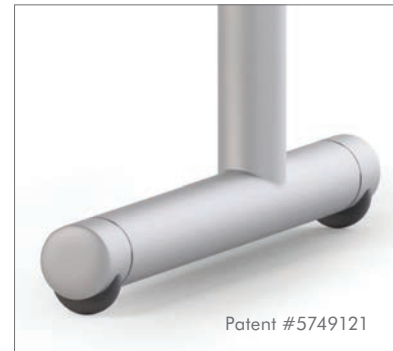
**F1600**



**F1602**



Storm ST5 folding tables, Q44 arm chairs



Patent #5749121

### STORM WHEEL

- Optional one leg with integrated wheels
- Reconfigures quickly



**STORM PEDESTAL TABLE**

ST3X





800/FLX cafe table, Thonet MOSS|Chill ottoman,  
Q44 arm chair, SP4F Spectra table



#### Q44

- Designed by Giovanni Baccolini
- Black mesh back standard
- Optional plastic back
- Upholstered seat
- Chrome frame, powdercoat is optional
- Standard with casters
- Optional glides available
- Stacks 5 high



#### LUCKY

- Chrome finish standard
- White textured anti-slip surface inside seat/back
- Gloss finish outside back available in: orange, red, black, white, beige and grey



Verona chairs, Spectra SP3F tables



CURV Table, Lucky side chair

**REACH**

- Push paddle height adjustment
- Height range 27" - 46"
- Counterbalanced, requires no cranking or power



GT514L



GT502

**VERONA CHAIR AND STOOL**

- Isoflex™ Contour Zone insures proper spine alignment for comfort.
- Sit to stand stool height
- Stool features 20" foot ring with glides



*Spectra SP6F table, Q44 arm chair, MOSS Chill ottomans  
Spectra legs available in square or round legs*



**SPECTRA MODESTY**  
• The modesty panel folds and locks neatly under the table.







### FLX

- Power Management System, available as an option on approved table bases
- Deep spider provides space for centered power unit
- Column acts as wire management
- Plug access through column or under base



### POWER OPTIONS



Eclipse



Hemisphere



Node



Glenbeigh Contemporary



Axil Z

### FLX APPROVED TABLE BASES



800



400



Syntech



Verona arm chairs, Symetris flip top tables with casters



Falcon offers a complete line of nesting and folding tables



Symetris starter & add on tables, Reva chair



Verona arm chairs, Syntech training tables



Storm folding tables



*Custom curved Menlo Park*





*MATS Lecture with corrugated modesty*



*Symetris freestanding tiered tables*

Falcon offers several permanently mounted or free standing tiered lecture hall products. Tables can be powered and may include Simplex or USB ports. Curved applications are custom manufactured to insure a perfect fit



*Slimline Laminate Modesty*



*Contoured Steel Modesty*



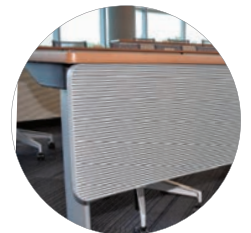
*Acrylic Modesty with flip top hardware*



*Laminated Modesty*



*Perforated Steel Modesty*



*Corrugated Modesty*

## SPECTRA

- Easy to Roll, Fold, and store
- Folding or stationary.
- Square or round legs
- Modesty folds and locks under the table
- Integrated ganging mechanisms standard
- Casters available on 2 or 4 legs



SP6FA



SP6F



Optional Storage  
Cart

## SYNTECH

- Arch foot design available as cantilever or symmetrical
- Extruded aluminum column with integrated power management
- 98% recycled cast iron
- Available in Stationary, and Nesting versions



25OX-22



25OCS



250 Series

## STORM

- Unique folding self supporting chassis eliminates warping tops
- Patented, concealed wheel works to easily move the tables
- Available in Stationary, Folding, and Nesting versions



ST3 Series



ST6TN/ST6CN



ST6T/ST6C

## SYMETRIS

- Use throughout the facility for meeting, café, and coffee tables, maintaining consistent design element
- 98% recycled cast iron
- Available in Stationary, and Nesting versions
- Shared leg option available



36S Starter



36N Flip/Nesting



Symetris Pod

## MATS

- Cantilever or symmetrical legs
- Shared leg option available
- Folding, Stationary and Lecture hall versions
- Permanent mount lecture hall option
- Extra capacity wire management gallery
- Separation between power and data feeds



41S2 Shared Leg Stationary  
Tables Starter and Add on



41S2 Integrated Vertical and  
Horizontal Wire Management

## COMIDA

- Complete family of community tables
- Available in occasional, dining, counter, or work height
- Table top options include distressed solid ash, maple plank, butcher block, laminate with Tmold or self edge
- 80ST version features wire management leg



80ST



79ST Counter Height



79ST Stand Up Height



74PT

## EXCHANGE 74PT

- Available in task or active height
- Ships KD, simplifies installation and reduces cost
- Double modesty hides the cords and provides easier access to floor monument

## BLOG WHITEBOARD by Thonet

- Includes casters for easy mobility
- Porcelain writing surface



## CONFERENCE & COMMUNITY TABLES

- Choose from a variety of base and table top styles
- Tops are available in many standard sizes and shapes
- Custom sizes, shapes, and finishes also available



J91CT



**MOSS | 3 by Thonet**



**MOSS | CHILL**

T3301-18 (round)  
T3306-18 (square)

- Use to introduce vibrant colors to any environment
- Variety of shapes and sizes



**F1600**

F1600

- Wood or upholstered back
- Stacks 4 on the floor
- Stacks 8 on dolly (2 stacks of 4)



**Q44**

GT100-1

- Standard with black mesh, chrome frame, and casters
- Optional glides available
- Stacks 5 high



**LUCKY**

GT707-1

- Two color polypropylene
- Outside shell colors: white, beige, grey, orange, red, or black
- Optional upholstery
- Stacks 5 high



**VERONA**

GT506

- Polypropylene seat/back
- Optional upholstered seat/back
- Stacks 6 on the floor
- Stacks 8 on dolly



**MOSS | ONE by Thonet**

MMS with Casters

- Modular or freestanding
- Quik-Kinect device allows reconfiguration without tools
- Variety of shapes available
- Tablet available



**MOSS | NOOK by Thonet**

MNK

- Modular or freestanding
- Optional full or half upper screens available
- Quik-Kinect device allows reconfiguration without tools
- Variety of shapes available
- Back mounted writing surface available



**BLOG by Thonet**

BLG51

- Collection of lounge seating, tables, and stools



**FIFTH AVENUE**

FAHB

- Available in low back, high back, and counter seat height
- Shown with optional power