



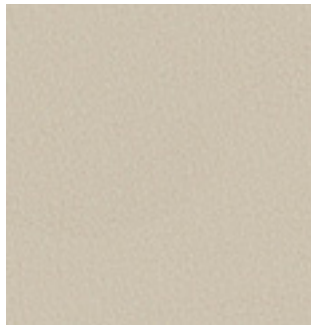
P E R F O R M A N C E



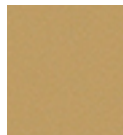
MOMENTUM
TEXTILES & WALLCOVERING

CLEAN VINYL BENEFITS

- 100% Clean Vinyl
- Phthalate free
- Prop 65 compliant
- HPD
- GREENGUARD certified
- Low-VOC CA Section 01350
- 100,000 - 1 million double rubs
- Extensive list of approved cleaners - including COVID approved cleaners



EVO CV ASH



CORK



ZEST



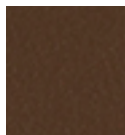
TANGELO



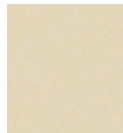
NUBUCK



SADDLE



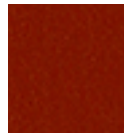
CAROB



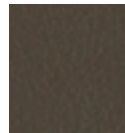
KHAKI



SCARLET



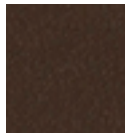
BRICK



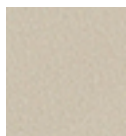
MINK



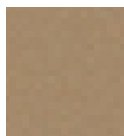
SHIRAZ



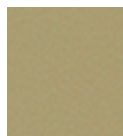
GANACHE



ASH



PATH



SAGE



CYAN



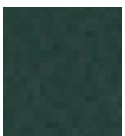
AQUA



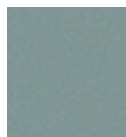
KELLY



BALTIC



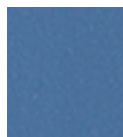
CYPRUS



CHAMBRAY



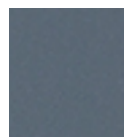
BREEZE



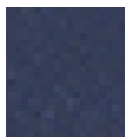
SKYLAR



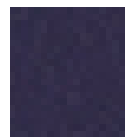
BLUET



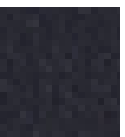
PERI



BLUESTAR



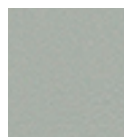
REGAL



INDIGO



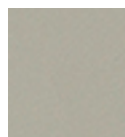
PUMICE



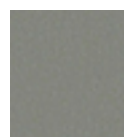
MIST



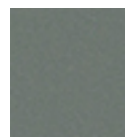
DEW



PUTTY



PEWTER



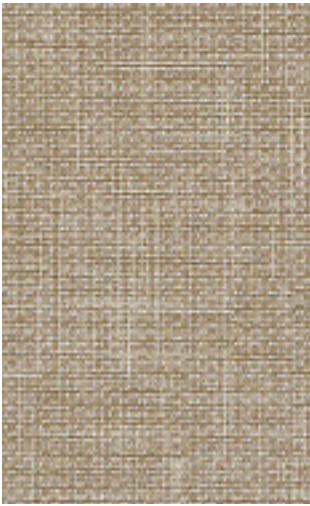
RAM



JETTY



ONYX



VANGUARD CV LUNETTE



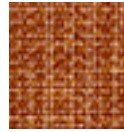
CREME



BUFF



GILDED



SAVOR



AUTUMN



SEQUOIA



LUNETTE



SPROUT



SPRUCE



FRENCH



CALICO



POLARIS



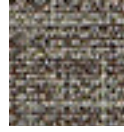
FOIL



PEBBLE



STEEL



CAVE



PIER



CARBON



HYDE CV
CAMEL



ECRU



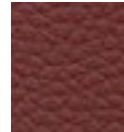
CANEWARE



SADDLE



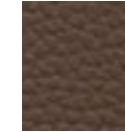
APRICOT



CLARET



CASSIS



DERBY



CELDAON



FERN



DEWDROP



RAINFALL



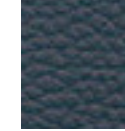
SKYLIGHT



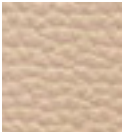
CYPRUS



CADET



INKWELL



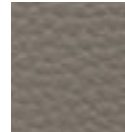
PARCHMENT



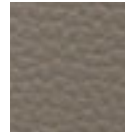
DRIFTWOOD



PUMICE



LICHEN



GRIFFIN



LONDON



AGATE



ONYX



TRIBECA CV CLOUD



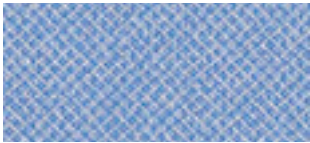
MICA



GRIFFIN



FOSSIL



AIRY



DOWNPOUR



CASCADE



MARINER



LICHEN



PLUME



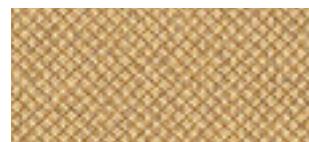
SHADOW



SLATE



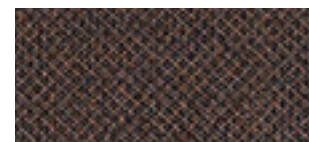
SHELL



CANE



RUBINE



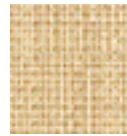
JAVA



BEELINE EPU FOSSIL



CANVAS



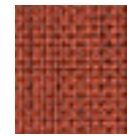
DUNE



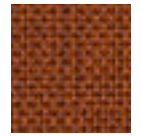
SISAL



ORIOLE



SPICE



AUTUMN



OAT



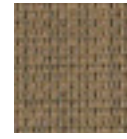
CORK



SPROUT



EUCALYPTUS



PORTOBELLO



WALNUT



NIMBUS



GEYSER



MYTH



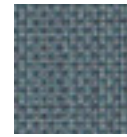
FORGE



JETTY



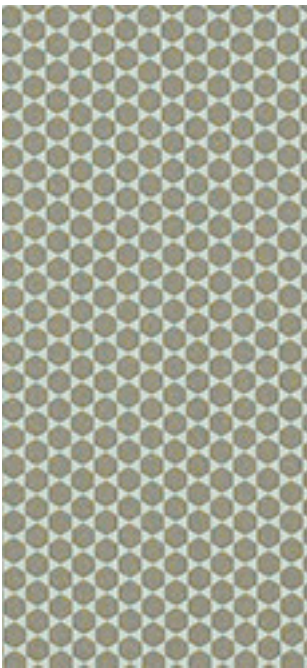
TIDAL



LAKE



ECLIPSE



MOGUL EPU SHINE



GENIUS



STATELY



HOTSHOT



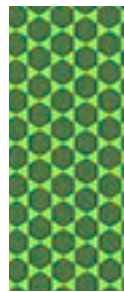
BULLSEYE



RULER



RICH



ENVY



DIGITAL



DEAL



BOSS



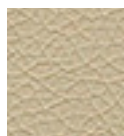
FINANCE



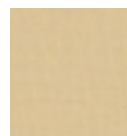
VIP



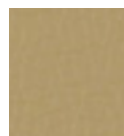
CANTER EPU FOLKSTONE GREY



SAND DOLLAR



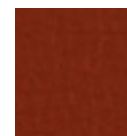
SAND



PYRITE



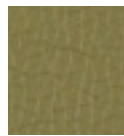
SADDLE



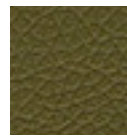
ANCHO



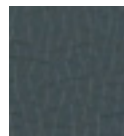
TAWNY



VERDITE



PINE



BALLAD



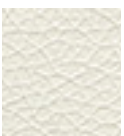
NIMBUS



INK



TWILIGHT



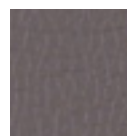
SUMMER WHITE



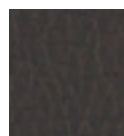
BLUSH GREY



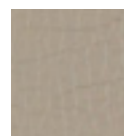
LUCID



STORM



NIGHT



QUARRY



IRON



ONYX



E P U B E N E F I T S

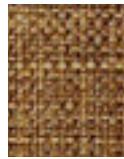
- PVC free
- Produced using no water and 56% less energy
- Zero waste chemicals and zero solvents in production
- GREENGUARD certified
- Over 900,000 double rubs
- Superior hydrolysis resistance at 15 weeks
- Extensive list of approved cleaners - including COVID approved cleaners



COVER CLOTH PLATINUM



ANTIQUE



HEIRLOOM



FLAME



ZEST



SAVOR



FUSCHIA



SORREL



CYAN



DELFT



ELECTRIC



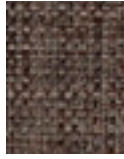
INDIGO



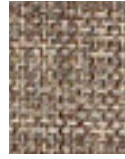
BOUQUET



OAT



HICKORY



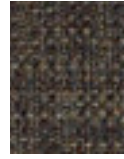
TAUPE



VESSEL



VESPER



TAIGA



GRAPHITE



JET



FAUX FELT BARK



CORAL



BERRY



VIBRANT



PATH



CAMEL



PUMICE



SPROUT



STONE



QUAIL



POOL



LAGOON



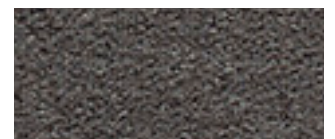
PEBBLE



GRAPHITE



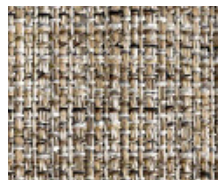
FLANNEL



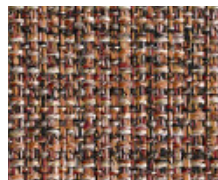
CHARCOAL



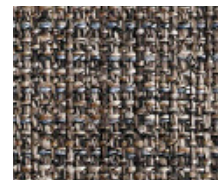
CARAVAN SHORE



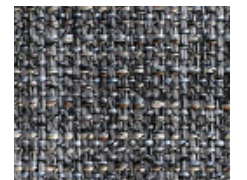
MILKWEED



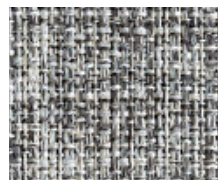
EMBER



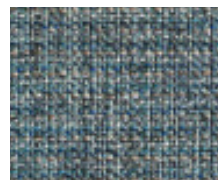
TRAIL



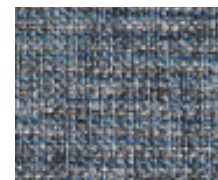
SHADOW



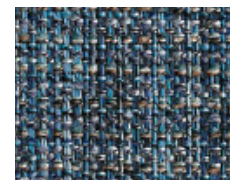
GRANITE




COVE



BLUESTAR



ZIRCON



C R Y P T O N B E N E F I T S

- Crypton® is the industry's leading sustainable high performance finish
- GREENGUARD certified
- Reduced environmental impact
- Stain resistant with an impenetrable moisture barrier
- Cleans easily with mild soap and water or any of one of extensive list of approved cleaners, including bleach
- Sustainable: made with at least 50% recycled polyester



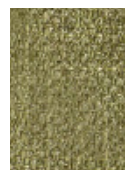
SMART SOFT ANTIQUE



BISQUE



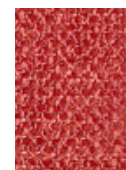
JUTE



KIWI



CLAY



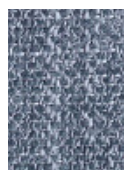
GUAVA



EARTHEN



SILVER



CASCADE



DELFT



INK



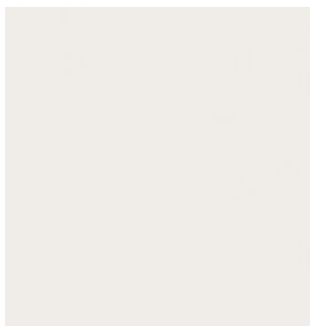
SHALE



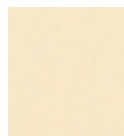
SLATE

SILICA BENEFITS

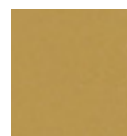
- 100% silicone
- Produced using less water and energy
- Made with no harmful chemicals
- Zero PVC - Zero solvents
- No harm to air or water quality at end of life
- GREENGUARD certified
- Ink erasable with water
- All tested stains clean with a damp cloth
- Bleach cleanable
- Extensive list of approved cleaners - including COVID approved cleaners
- Extremely durable
- Inherently antimicrobial and antifungal
- Extreme colorfastness



SILICA CUMULUS



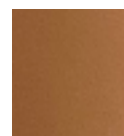
FLAX



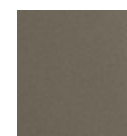
GINGER



CANYON



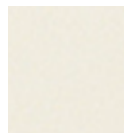
OXIDE



MINERAL



MANOR



LOTUS



FIRELIGHT



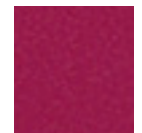
DARE



MARIGOLD



KERMES



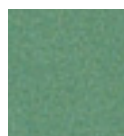
JEWEL



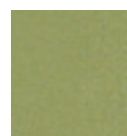
SURF



HOSTA



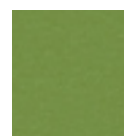
GLADE



DEWPOINT



APPLETTINI



GO



HERBAL



BOTANIC



ALFRESCO



OASIS



TROPIC



REGATTA



BRIGHT
NIGHT



SMALT



BETTA



INK



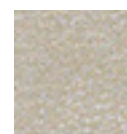
PUTTY



BREAKWATER



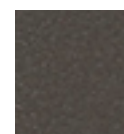
NICKEL



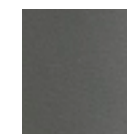
CHROME



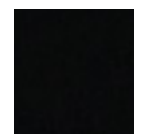
GALLANT



ECLIPSE



SHADE



NERO



CONNECT WITH
YOUR SALES REP

FIND MY REP



Search for Covid Cleaners

All Momentum fabrics are made with recycled or natural fibers. All products are GREENGUARD certified.

— To order memos for project use, visit momentumtextilesandwalls.com or contact Momentum Textiles inside sales at 800-366-6839. —



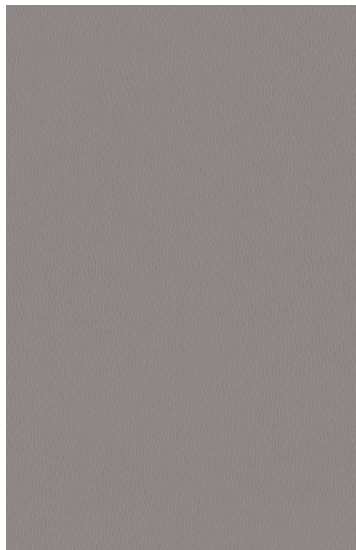
CARSON CV



MOMENTUM
TEXTILES & WALLCOVERING

B E N E F I T S

- 100% Clean Vinyl
- Phthalate Free
- Prop 65 Compliant
- HPD
- GREENGUARD Certified
- Low-VOC CA Section 01350
- 500,000 Double Rubs
- Extensive list of approved cleaners - including COVID approved cleaners



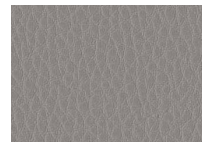
CARSON CV STERLING



BLUFF



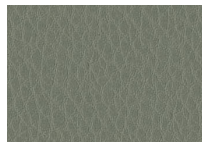
STONE



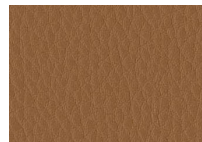
STERLING



AIRY



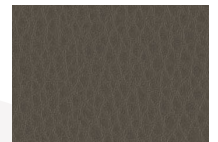
SAGE



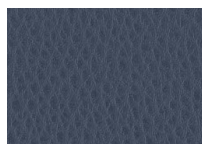
BUCK



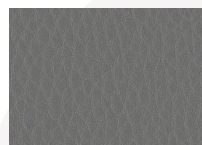
AZURE



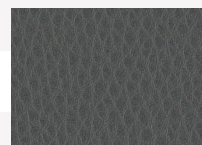
ROAST



INDIGO



FOG



GRAPHITE



SHADOW

CONNECT WITH
YOUR SALES REP

FIND MY REP



Search for Covid Cleaners

All Momentum fabrics are made with recycled or natural fibers. All products are GREENGUARD certified.

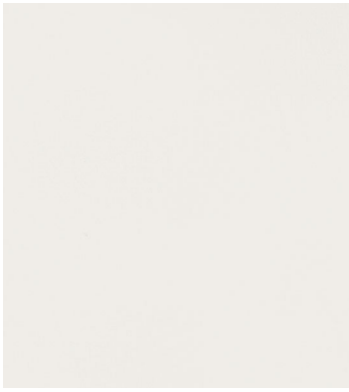
— To order memos for project use, visit momentumtextilesandwalls.com or contact Momentum Textiles inside sales at 800-366-6839. —

ALLIANCE

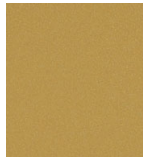
PERFORMANCE



MOMENTUM
TEXTILES & WALLCOVERING



SILICA CUMULUS



GINGER



AQUA



SURF



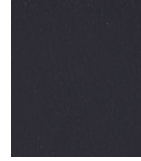
ALLOY



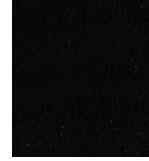
QUARTZ



REGATTA



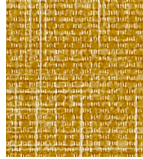
GALLANT



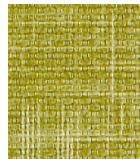
NERO



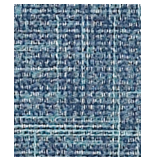
VANGUARD CV LUNETTE



GILDED



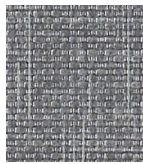
SPROUT



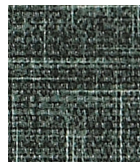
CALICO



FOIL



FRENCH



SPRUCE



POLARIS



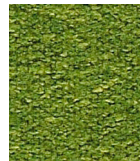
STEEL



FAUX FELT PEBBLE



STONE



SPROUT



BARK



FLANNEL



CORAL



LAGOON



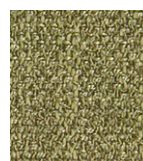
QUAIL



CHARCOAL



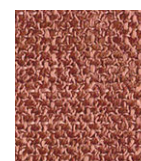
SMART SOFT ANTIQUE



KIWI



JUTE



CLAY



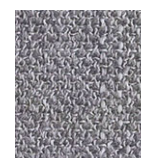
EARTHEN



CASCADE



INK



SILVER



SLATE



EVO CV MIST



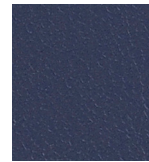
ASH



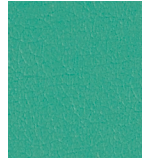
TANGELO



PUTTY



BALTIC



CYAN



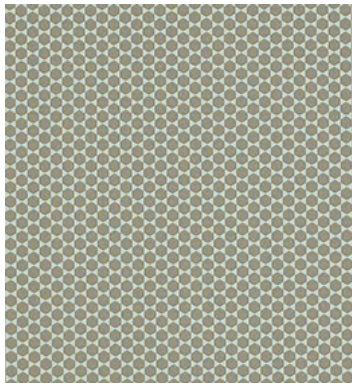
SAGE



CAROB



JETTY



MOGUL EPU SHINE



GENIUS



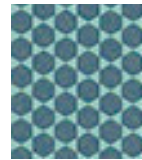
PROFIT



TOPS



RULER



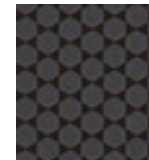
DEAL



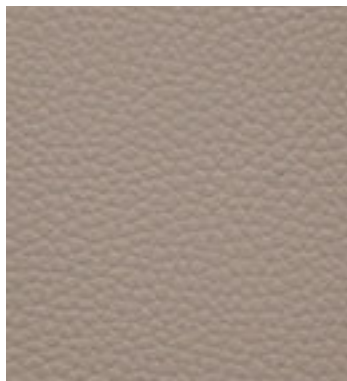
FINANCE



BOSS



VIP



HYDE CV PUMICE



PARCHMENT



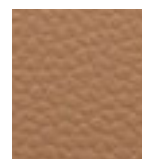
CELADON



DEWDROP



LONDON



CANEWARE



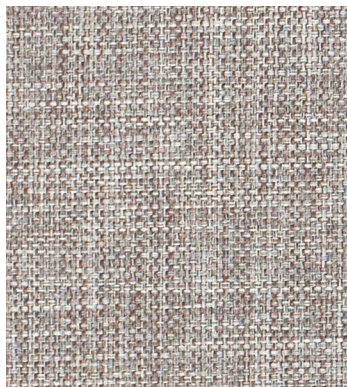
CYPRUS



THISTLE



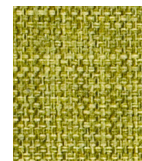
AGATE



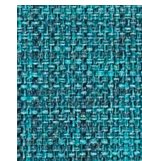
COVER CLOTH PLATINUM



OAT



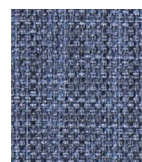
SORREL



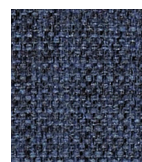
CYAN



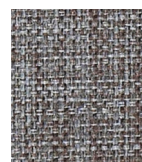
GRAPHITE



DELFT



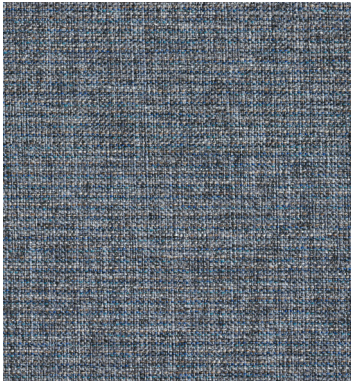
INDIGO



VESPER



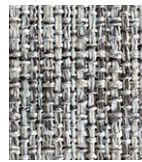
JET



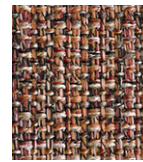
CARAVAN BLUESTAR



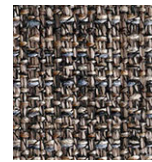
MILKWEED



GRANITE



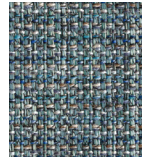
EMBER



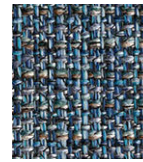
TRAIL



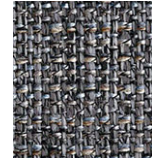
SHORE



COVE



ZIRCON



SHADOW



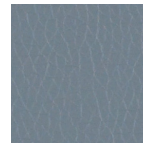
CANTER EPU QUARRY



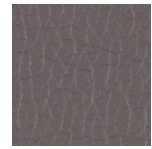
SUMMER WHITE



DADDLE



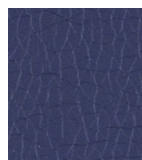
NIMBUS



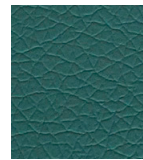
STORM



EARTH



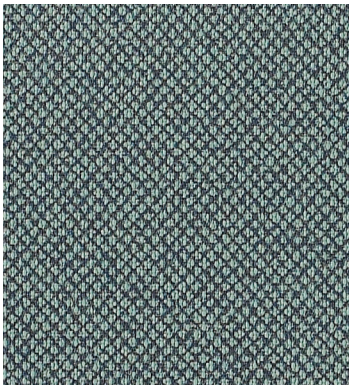
INK



TEAL GREEN



ONYX



TRIBECA CV CASCADE



SHELL



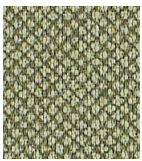
MICA



CLOUD



DOWNPOUR



LICHEN



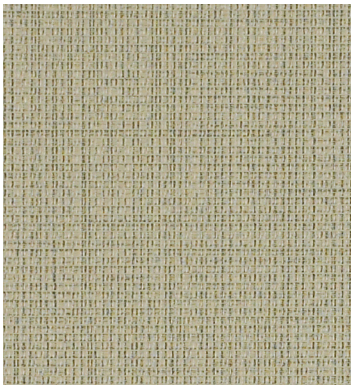
MARINER



PLUM



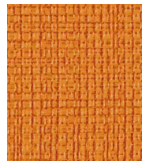
SHADOW



BEELINE EPU FOSSIL



OAT



ORIOLE



GEYSER



FORGE



PORTOBELLO



LAKE



JETTY



TIDAL

PERFORMANCE ALLIANCE

Pattern - width	Fiber content	Finish	Abrasion	Lightfastness	Approx. repeat	Cleaning code
Beeline EPU - 54" ☛ ☛ ☛ ☛ ☛ *	100% EPU Polyurethane		900,000 double rubs	Class 4 200 hours		W BC (4:1)
Canter EPU - 54" ☛ ☛ ☛ ☛ ☛ *	100% EPU Polyurethane		1,000,000 double rubs	Class 4 200 hours		W BC (4:1)
Caravan - 57" ☛ ☛ ☛ ☛ ☛ *	100% Polyester	Crypton	100,000 double rubs	Class 5 40 hours		WS BC (10:1)
Cover Cloth - 59" ☛ ☛ ☛ ☛ ☛ *	56% Repreve® Post Consumer Recycled Polyester, 44% Polyester	Crypton Green®	200,000 double rubs	Class 4 40 hours		W BC (10:1)
EVO CV - 54" ☛ ☛ ☛ ☛ ☛ *	100% Clean Vinyl/Phthalate Free	Protective Topcoat	1,000,000 double rubs	Class 4 200 hours		WS BC (10:1)
Faux Felt - 56" ☛ ☛ ☛ ☛ ☛ *	62% Repreve® Post Consumer Recycled Polyester, 38% Polyester	Crypton Green®	75,000 double rubs	Class 4.5 40 hours		WS BC (10:1)
Hyde CV - 54" ☛ ☛ ☛ ☛ ☛ *	100% Clean Vinyl/Phthalate Free	Protective Topcoat	1,000,000 double rubs	Class 5 200 hours		WS BC (10:1)
Mogul EPU - 54" ☛ ☛ ☛ ☛ ☛ *	100% EPU Polyurethane		450,000 double rubs	Class 4.5 200 hours	1/8" L, 1/4" W	W BC (10:1)
Silica - 54" ☛ ☛ ☛ ☛ ☛ *	100% Silicone		365,000 double rubs	Class 4.5 200 hours		WS BC (4:1)
Smart Soft - 56" ☛ ☛ ☛ ☛ ☛ *	50% Polyester, 50% Recycled Polyester	Crypton	100,000 double rubs	Class 4 40 hours		WS BC (10:1)
Tribeca CV - 54" ☛ ☛ ☛ ☛ ☛ *	100% Clean Vinyl/Phthalate Free	Protective Topcoat	100,000 double rubs	Class 4 200 hours		W BC (10:1)
Vanguard CV - 54" ☛ ☛ ☛ ☛ ☛ *	100% Clean Vinyl/Phthalate Free	Protective Topcoat	100,000 double rubs	Class 4 200 hours		W BC (10:1)



GREENGUARD certified.
CA Section 01350 compliant
Eligible for CHPS Low-Emitting
Material Credits



Search for fabrics by
approved cleaners



Find hundreds of pre-approved,
in grade and in stock fabrics
in 5 simple steps

* ACT® Registered Certification Marks

These fabrics when used with proper components are compatible with California Technical Bulletin 133

Multiple factors affect fabric durability and appearance retention, including end-user application and proper maintenance

Abrasion test results exceeding ACT Performance Guidelines are not an indicator of product lifespan

Cleaning Code Definition

- W: Water-based foam or cleaner
- WS: Clean with water-based cleaning agents or foam
- BC: Bleach Cleanable

Visit memosamples.com to view full pattern repeat and complete specs

©2023

08997003



MomentumTextilesAndWalls.com | 800.366.6839

MOMENTUM
TEXTILES & WALLCOVERING



GRAPH ALPINE



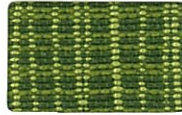
CHALICE



CORK



POPPY



PARROT



TIDAL



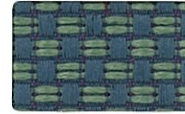
RUBY



PERK DIJON



SESAME



CABANA



AUBURN



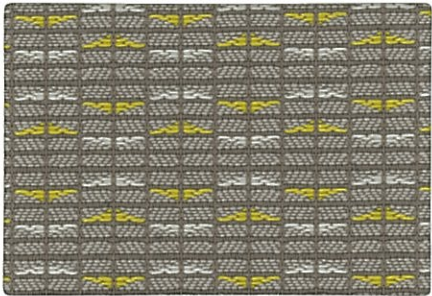
CEDAR



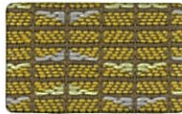
PEWTER



FLINT



SLICE MILLER



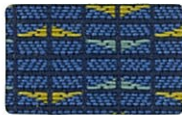
PUMICE



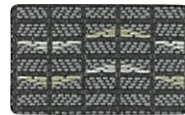
HENNA



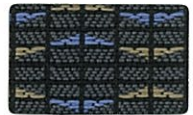
GRAPHITE



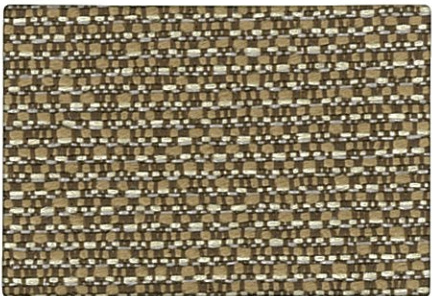
ADMIRAL



CHARCOAL



SLATE



BANGLE CORK



ORCHID



BALTIC



GRANITE



TEAK



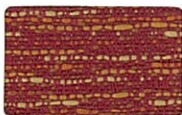
SUEDE



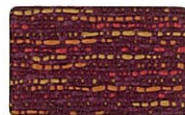
SABLE



FUSE MOREL



PIMENTO



CARMINE



LUNAR



AZOREAN



WALNUT



PEPPER

Width - Pattern	Grade	Fiber Content & Backing	Abrasion (D.R.)	Light-fastness	Approx. Repeats	Cleaning Code
54" BANGLE ☞ ☒ ☛ ☞ ☛*	3	58% Post Consumer Recycled Polyester, 42% Polyester Acrylic Backing	51,000	40 Hrs. Class 4.5		WS
54" FUSE ☞ ☒ ☛ ☞ ☛*	4	65% Post Industrial Recycled Polyester, 35% Post Consumer Recycled Polyester Latex Backing	100,000	40 Hrs. Class 4.5		WS
56" GRAPH ☞ ☒ ☛ ☞ ☛*	2	75% Repreve® Post Consumer Recycled Polyester, 25% Polyester Acrylic Backing	170,000	40 Hrs. Class 5	3 ¾" L, 7 ½" W	W
54" PERK ☞ ☒ ☛ ☞ ☛*	3	50% Post Consumer Recycled Polyester, 50% Polyester Acrylic Backing	102,000	40 Hrs. Class 5	¼" L, ¼" W	WS
54" SLICE ☞ ☒ ☛ ☞ ☛*	4	84% Repreve® Post Consumer Recycled Polyester, 16% Polyester Acrylic Backing	80,000	40 Hrs. Class 5	¾" L, ¾" W	WS

*ACT® Registered Certification Marks

EXPLANATION OF ACT ICONS FOR UPHOLSTERY

FIRE RETARDANCY

Flammability testing determined as fabric's resistance to burning.



PASSES
California 117-2013

COLORFASTNESS TO WET & DRY CROCKING

Colorfastness to wet & dry crocking refers to the rubbing off of color from the fabric onto clothing, hands or other materials and can occur under wet or dry conditions.



PASSES
AATCC 8-1974 Dry Crocking, Class 4 minimum; Wet Crocking, Class 3 minimum

COLORFASTNESS TO LIGHT

Colorfastness to light is the degree to which fabric will retain its color when exposed to light.



PASSES
AATCC 16A-1974 or AATCC 16E-1976; Class 4 minimum at 40 hours
NOTE: Class 4 minimum at 60 hours is recommended for direct sunlight exposure situations

PHYSICAL PROPERTIES

3 physical property tests include: brush pill test to determine a fabric's pilling. Breaking/tensile strength is the ability of a fabric to withstand tension without breaking or tearing. Seam slippage is the pulling apart of fabrics at the seams.



PASSES
Brush Pill ASTM D3511, 3-4 minimum
Breaking Strength ASTM D3597-D1682-64 (1975) 50 lbs. minimum in warp & weft
Seam Slippage ASTM D3597-D434-75 25 lbs. minimum in warp & weft

For memo samples please contact.

MOMENTUM
T E X T I L E S

Canada 905-670-5002

Toll Free 800-366-6839

memosamples.com



GREENGUARD Gold Certified. CA Section 01350 compliant.
Eligible for CHPS Low-Emitting Material Credits.

ABRASION

Abrasion is the ability of a fabric to withstand damage from wear and rubbing. There is a general contract specification as well as a heavy duty specification.



PASSES
General Contract ASTM 3597 modified (#10 cotton duck); 15,000 double rubs Wyzenbeek Method



Heavy Duty ASTM 3597 modified (#10 cotton duck); 30,000 double rubs Wyzenbeek Method or ASTM D4966 (with 21 oz. weight); 40,000 rubs Martindale Method

CLEANING CODE DEFINITIONS

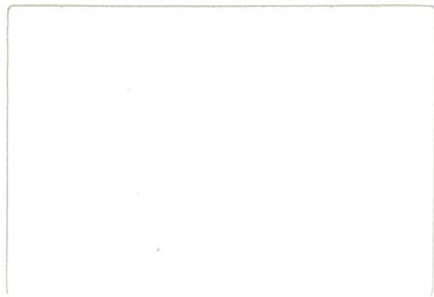
W: Water-based cleaning agents or foam may be used.

WS: Clean with water-based cleaning agents, foam or pure, water-free solvents (Energine, Carbona, Renuzit or other similar products). Vacuuming or light brushing is recommended to prevent dust and soil buildup.

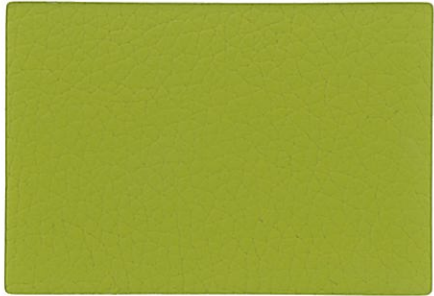
FALCON
falconproducts.com

Shelby Williams®
shelbywilliams.com

T H O N E T
thonet.com



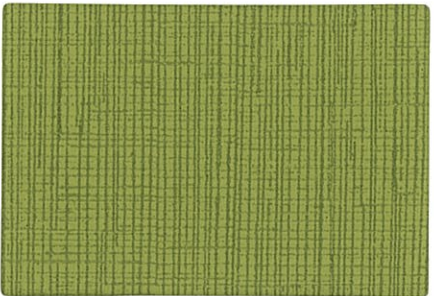
SILICA CUMULUS



CANTER EPU KIWI GREEN



ENDURANCE EPU PYRITE



BEELINE EPU SPROUT



BRAVO II ALFALFA



BURNISHED



APPLETTINI



SAND



SADDLE



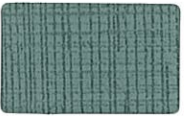
SMITH



LAPIS



OAT



GEYSER



HEMATITE



SADDLE



QUARTZ



BRIGHT NIGHT



EARTH



SABLE



NEPTUNE



BRONZE



SISAL



PORTOBELLO



GRAYSTONE



NIGHT



ALLOY



NERO



QUARRY



ONYX



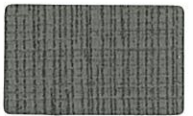
COPPER



ARMOR



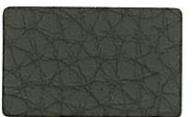
ORIOLE



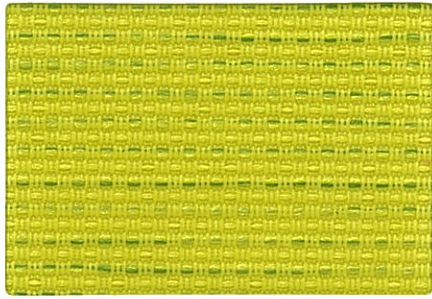
FORGE



MICA



IRON



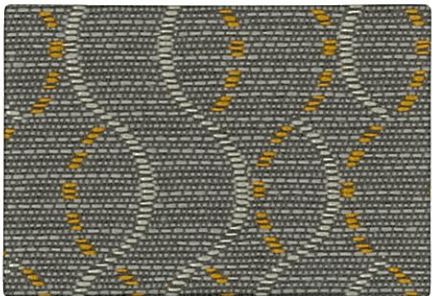
SPORT DAYGLOW



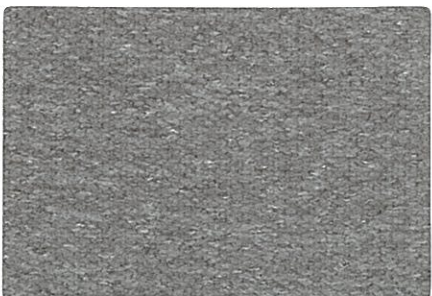
COVER CLOTH PLATINUM



FLOCK FERN



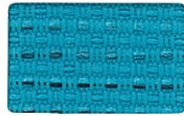
ASCEND FLANNEL



FAUX FELT GRAPHITE



PEWTER



TURQUOISE



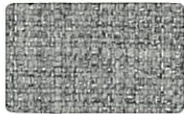
SORREL



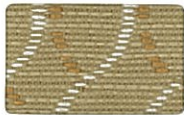
TAUPE



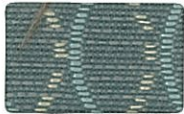
TWINE



FLANNEL



DUNE



CALM



PUMICE



SPROUT



KOI



SAGE



CYAN



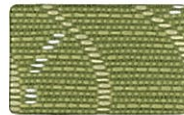
FLAME



HARP



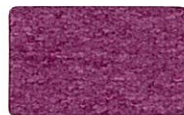
CAYMAN



GROW



CONSTANT



BERRY



LAGOON



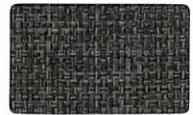
APPLE



COBALT



VESPER



GRAPHITE



AMBER



IVY



MAIZE



DUSK



POOL



VIBRANT

Width - Pattern	Grade	Fiber Content & Backing	Finish	Abrasion (D.R.)	Light-fastness	Approx. Repeats	Cleaning Code
56" ASCEND ☘ ☙ ☚ ☛ ☜ ☝	5	61% Repreve® Post Consumer Recycled Polyester, 39% Polyester	Crypton® Green	200,000	40 Hrs. Class 4	6" L, 1 3/8" W	W Bleach Cleanable (10:1)
59" COVER CLOTH ☘ ☙ ☚ ☛ ☜ ☝	4	56% Repreve® Post Consumer Recycled Polyester, 44% Polyester	Crypton® Green	200,000	40 Hrs. Class 4		W Bleach Cleanable (10:1)
56" FAUX FELT ☘ ☙ ☚ ☛ ☜ ☝	4	62% Repreve® Post Consumer Recycled Polyester, 38% Polyester Acrylic Backing	Crypton® Green	75,000	40 Hrs. Class 4.5		WS Bleach Cleanable (10:1)
56" FLOCK ☘ ☙ ☚ ☛ ☜ ☝	4	53% Recycled Polyester 47% Polyester	Crypton® Green	140,000	40 Hrs. Class 4.5		W Bleach Cleanable (10:1)
56" SPORT ☘ ☙ ☚ ☛ ☜ ☝	4	98% Post Consumer Recycled Polyester, 2% Polyester	Crypton® Green	100,000	40 Hrs. Class 4.5		W Bleach Cleanable (10:1)

*ACT® Registered Certification Marks

EXPLANATION OF ACT ICONS FOR UPHOLSTERY


FIRE RETARDANCY

Flammability testing determined as fabric's resistance to burning.

 **PASSES**
California 117-2013


COLORFASTNESS TO WET & DRY CROCKING

Colorfastness to wet & dry crocking refers to the rubbing off of color from the fabric onto clothing, hands or other materials and can occur under wet or dry conditions.

 **PASSES**
AATCC 8-1974 Dry Crocking, Class 4 minimum; Wet Crocking, Class 3 minimum

COLORFASTNESS TO LIGHT

Colorfastness to light is the degree to which fabric will retain its color when exposed to light.

 **PASSES**
AATCC 16A-1974 or AATCC 16E-1976; Class 4 minimum at 40 hours
NOTE: Class 4 minimum at 60 hours is recommended for direct sunlight exposure situations

PHYSICAL PROPERTIES

3 physical property tests include: brush pill test to determine a fabric's pilling. Breaking/tensile strength is the ability of a fabric to withstand tension without breaking or tearing. Seam slippage is the pulling apart of fabrics at the seams.

 **PASSES**
Brush Pill ASTM D3511, 3-4 minimum
Breaking Strength ASTM D3597-D1682-64 (1975) 50 lbs. minimum in warp & weft
Seam Slippage ASTM D3597-D434-75 25 lbs. minimum in warp & weft

For memo samples please contact.

MOMENTUM
T E X T I L E S

Canada 905-670-5002

Toll Free 800-366-6839

memosamples.com




GREENGUARD Gold Certified. CA Section 01350 compliant.
Eligible for CHPS Low-Emitting Material Credits.

ABRASION

Abrasion is the ability of a fabric to withstand damage from wear and rubbing. There is a general contract specification as well as a heavy duty specification.

 **PASSES**
General Contract ASTM 3597 modified (#10 cotton duck); 15,000 double rubs Wyzenbeek Method

 **Heavy Duty** ASTM 3597 modified (#10 cotton duck); 30,000 double rubs Wyzenbeek Method or ASTM D4966 (with 21 oz. weight); 40,000 rubs Martindale Method

CLEANING CODE DEFINITIONS

W: Water-based cleaning agents or foam may be used.

WS: Clean with water-based cleaning agents, foam or pure, water-free solvents (Energine, Carbona, Renuzit or other similar products).
Vacuuming or light brushing is recommended to prevent dust and soil buildup.